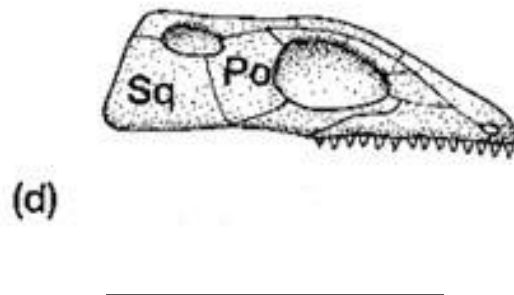
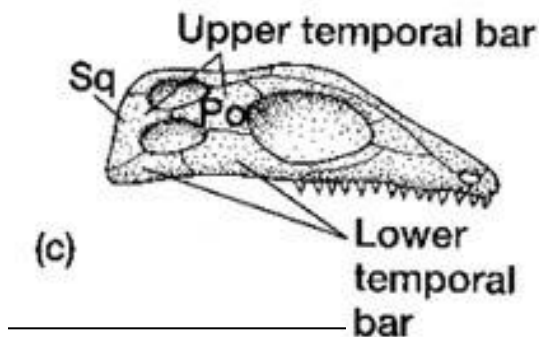
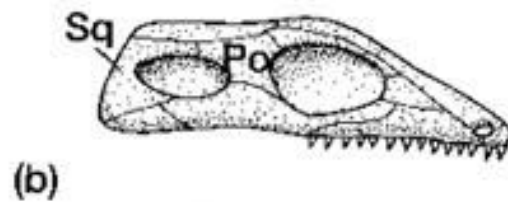
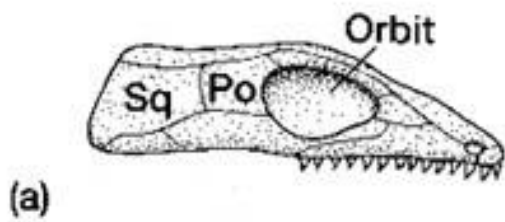


Homework # 3– Life Before Dinosaurs

1. An amniotic egg

- a. has an amnion    b. is characteristic of reptiles    c. has a mineralized shell    d. all of the above

2. Label the skulls below as Diapsid, Synapsid, Euryapsid, Anapsid



3. The amniotic egg and skeletal modifications for terrestrial locomotion are the key evolutionary developments that distinguish reptiles from

- a. birds    b. mammals    c. amphibians    d. thecodonts

4. There are two groups of diapsid reptiles, the \_\_\_\_\_ and the \_\_\_\_\_.

- a. lepidosaurs, archosaurs    b. dinosaurs, archosaurs    c. rhynchosaurs, lepidosaurs

5. Archosaurs include

- a. pterosaurs, crocodiles and turtles    b. dinosaurs, pterosaurs, crocodiles  
c. dinosaurs, crocodiles, snakes    d. lizards, snakes, allied forms

6. The following continents were part of Gondwana

- a. South America, Africa, Antarctica
- b. North America, Africa
- c. South America, North America
- d. Europe, Asia

7. The Triassic Pangaen climate was

- a. cold
- b. arid
- c. hot and dry
- d. strongly monsoonal

8. Flowering plants first appeared during the

- a. Middle Jurassic
- b. Early Cretaceous
- c. Late Cretaceous
- d. Early Permian

9. By the Early Jurassic, \_\_\_\_\_ were extinct

- a. pterosaurs
- b. lepidosaurs
- c. thecodonts
- d. dinosaurs

10. The worldwide climate of the Cretaceous can be described as

- a. a hot, humid greenhouse
- b. a frigid ice age
- c. an extremely dry desert
- d. seasonally arid

11. The sea that separated Laurasia from Gondwana during the Jurassic was the

- a. Caribbean
- b. Tethys
- c. Atlantic
- d. Torrean
- e. Iapetus

12. What name did Alfred Wegener give to his theory of horizontal crustal movements?

- a. Continental drift
- b. Isostasy
- c. Plate tectonics
- d. Rifting
- e. Seafloor spreading

13. What name did Wegener give to his proposed single supercontinent?

- a. Eurasia
- b. Gondwanaland
- c. Laurasia
- d. Pangea
- e. Panthalassa

14. What is the current comprehensive theory of horizontal crustal movements?

- a. Continental drift
- b. Isostasy
- c. Plate tectonics
- d. Rifting
- e. Seafloor spreading

15. The closest ancestors of mammals were

- a. diapsids
- b. synapsids
- c. euryapsids
- d. anapsids

16. Which of the following is correct about amniote skull evolution?

- a. the synapsid skull evolved from the euryapsid skull
- b. the anapsid skull evolved from the diapsid skull
- c. the euryapsid skull evolved from the diapsid skull
- d. the synapsid skull evolved from the diapsid skull
- e. the euryapsid skull evolved from the anapsid skull

17. The earliest forms of life were

- a. eukaryotic
- b. colonial
- c. prokaryotic
- d. photosynthetic

18. All chordates have (might have more than one answer)

- a. a notochord
- b. a true jaw
- c. a nerve cord
- d. calcareous bones

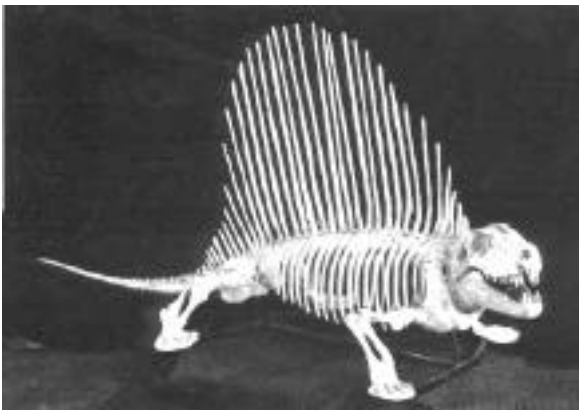
19. When did dinosaurs first appear (name the geologic period ?) \_\_\_\_\_

20. What vertebrates dominated the terrestrial world when dinosaurs appeared ? \_\_\_\_\_

BONUS

What kind of vegetation dominated the Jurassic ?

BONUS 2



What is this animal ? (Hint it is not a dinosaur)